

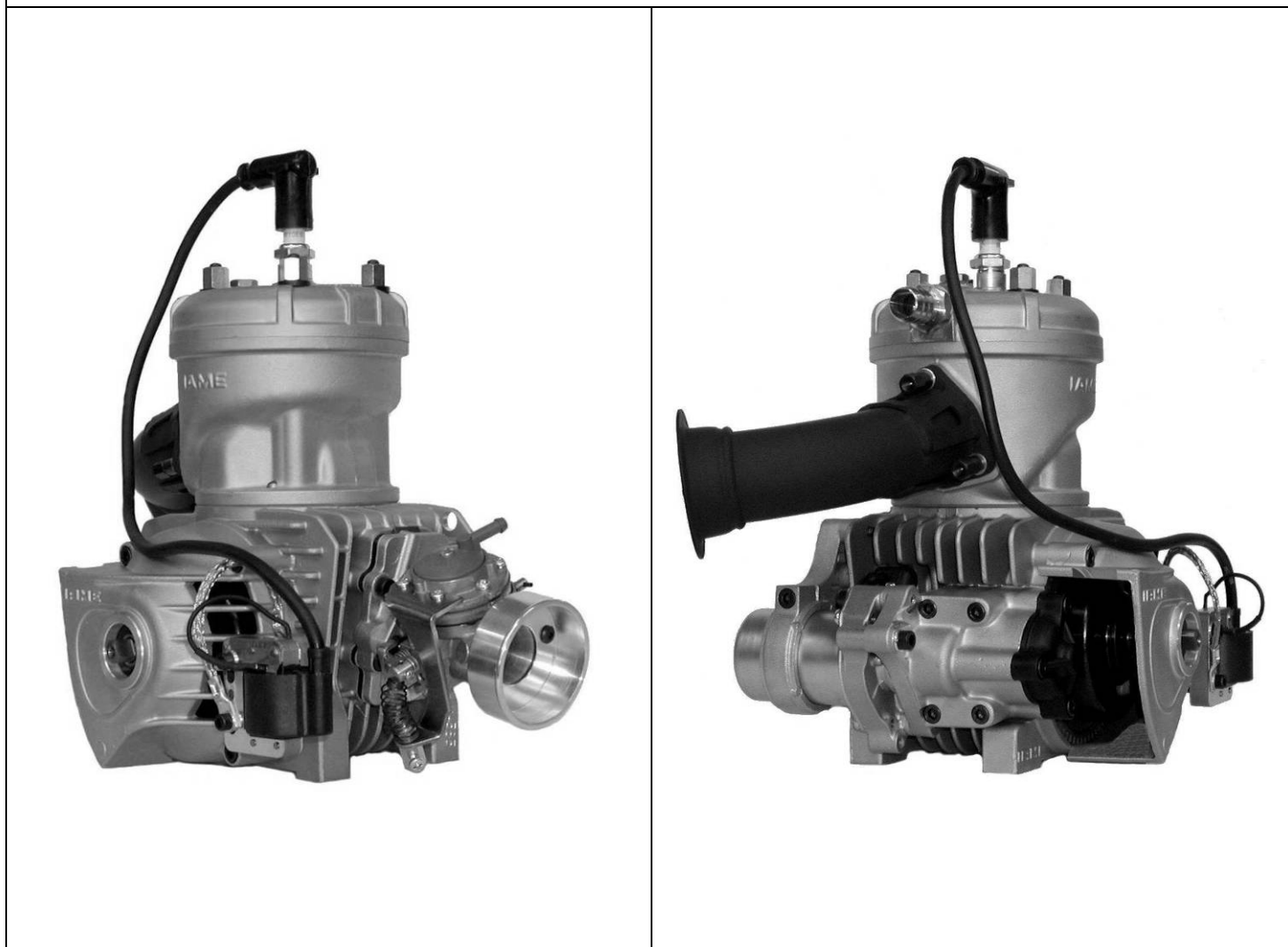
Manufacturer Address
 IAME S.p.A.
 Via Lisbona, 15
 24040 ZINGONIA (ITALY)

TAG RACING INTERNATIONAL™

Engine #

Manufacturer	IAME S.P.A. - ZINGONIA (I)
Make	PARILLA
Model	LEOPARD USA MY'09 125cc - RL - TaG
Inlet type	REED VALVE
Number of pages	14

PICTURE OF ENGINE



Signature and Stamp

--	--

Importer	
----------	--



TECHNICAL INFORMATION

A CHARACTERISTICS		
	Measurement	Tolerances
Volume of cylinder	123.67 cm ³	
Original bore	54 mm	
Theoretical maximum bore	54.28 mm	
Stroke	54 mm	
Cooling system	Water	
Number of carburation systems	1	
Number of transfer ports / ducts, cylinder / sump	3	
Number of exhaust ports / ducts	2	
Shape of the combustion chamber	Spherical	
Length between axes of the connecting rod	102 mm	± 0.10
Minimum weight of connecting rod	109 g	
Volume of combustion chamber	10 cm ³	± 0.5
Type of bearings and size	Big End of Con. Rod Bearing = 20 x 26 x 15 Little End of Con. Rod Bearing = 14 x 18 x 17.5 Crankshaft Bearing = 25 x 52 x 15 - 6205 type	

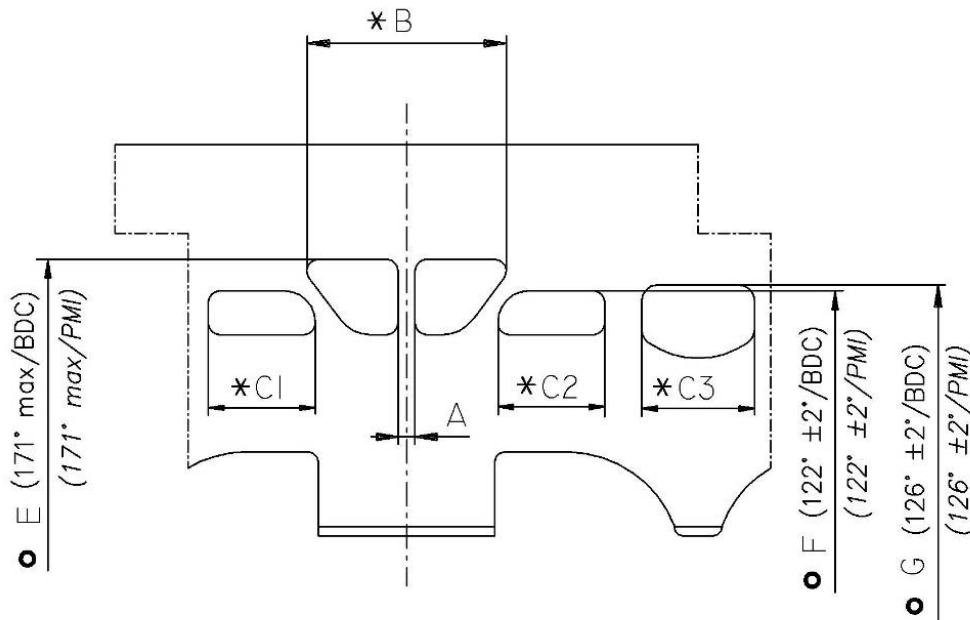
B OPENING ANGLES		
Exhaust	171° max.	
Of exhaust ports / ducts		

C LIST OF ACCESSORIES INCLUDED		
(List accessories as shown below)	Centrifugal clutch	
Carburetor with Venturi Ø23		
Generator for battery charging and wiring		
Electric starter		
Exhaust with flex		

D MATERIAL		
Cylinder	Aluminium	
Connecting rod	Steel	
Crankshaft	Steel	
Head	Aluminium	
Liner	Iron	
Crankcase	Aluminium	
Piston	Aluminium	
Piston Ring	Iron	



DRAWING OF THE CYLINDER DEVELOPMENT

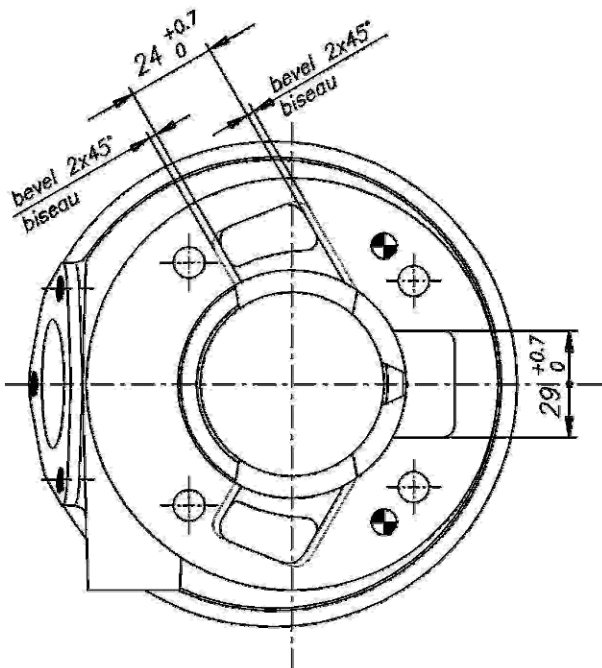


A	≥ 4 mm
B	≤ 50.2 mm
C1 = C2	≤ 25.5 mm
C3	≤ 28.3 mm
E	171° max
F	122° ± 2°
G	126° ± 2°

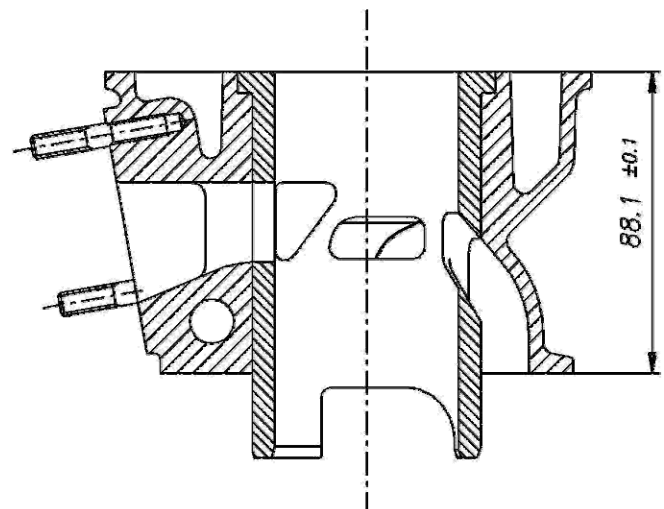
* CHORDAL READING
LECTURE CORDALE

○ ANGULAR READING BY INSERTING A 0.2 mm GAUGE
LECTURE ANGULAIRE PAR INSERTION D'UNE CALE DE 0.2 mm

DRAWING OF THE CYLINDER BASE

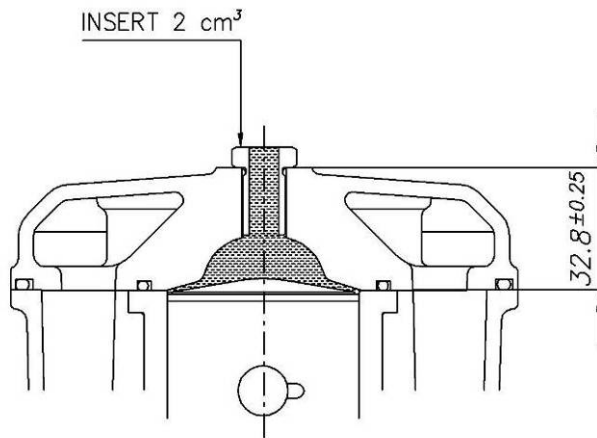


CYLINDER SECTION VIEW



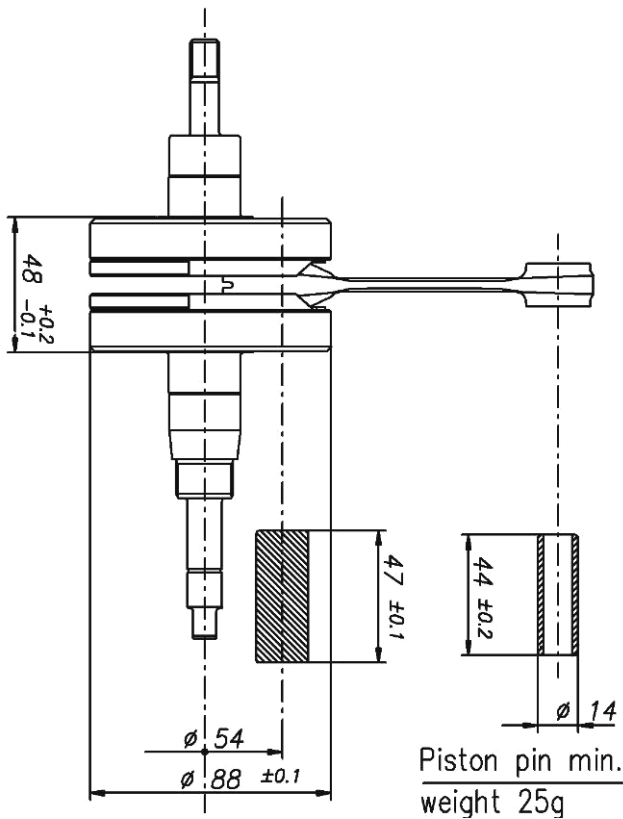


DRAWING OF THE CYLINDER HEAD AND THE COMBUSTION CHAMBER

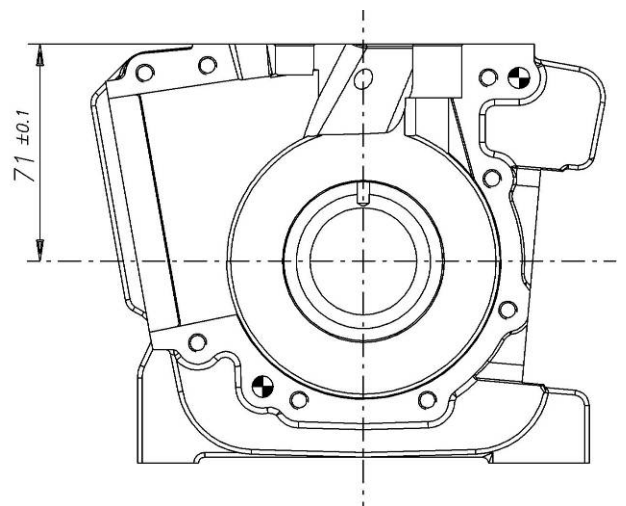


COMBUSTION CHAMBER VOLUME = 9.5 cm³ min.
 VOLUME CHAMBRE COMBUSTION = 9.5 cm³ min.

DRAWING OF THE CRANKSHAFT



DRAWING OF THE INSIDE OF SUMP

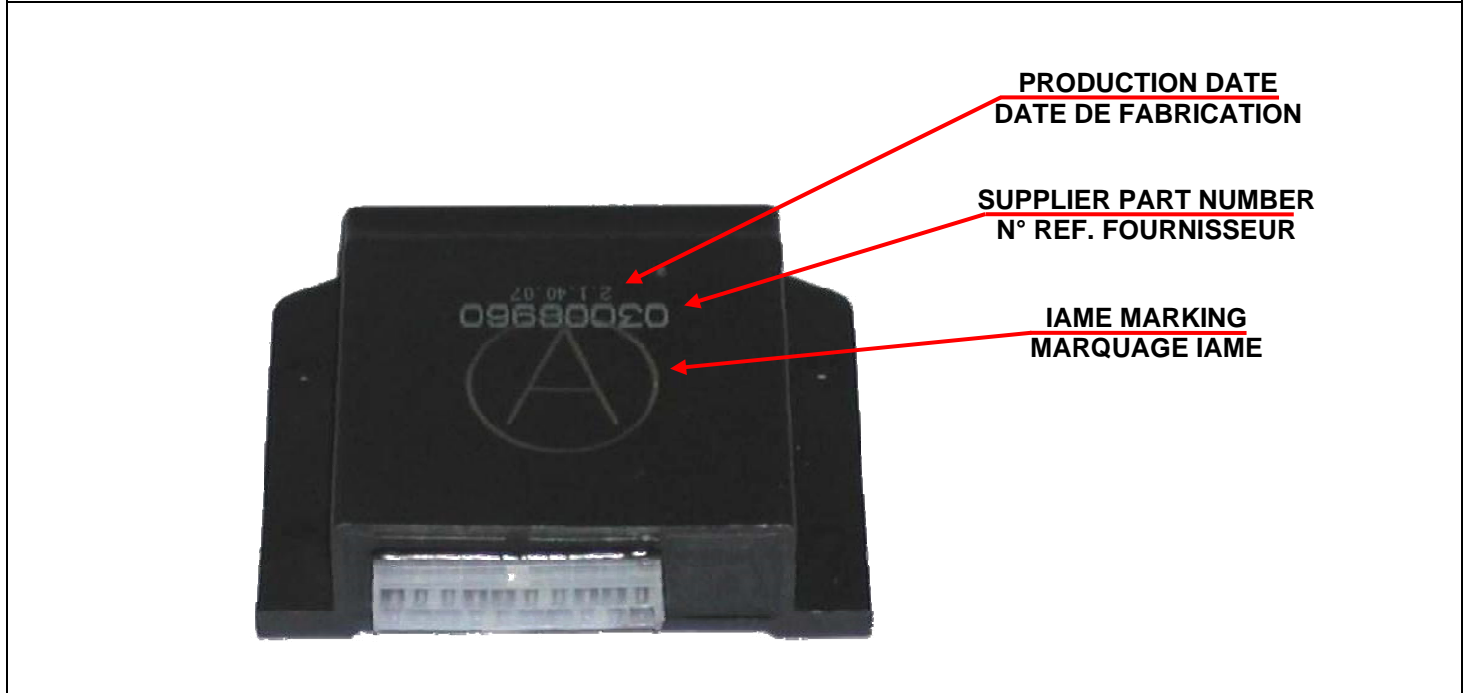




IGNITION	
Manufacturer	SELETTRA
Model Number	
Rotation	COUNTERCLOCKWISE
Description	- DIGITAL « K »

PHOTO OF IGNITION	PHOTO OF COIL

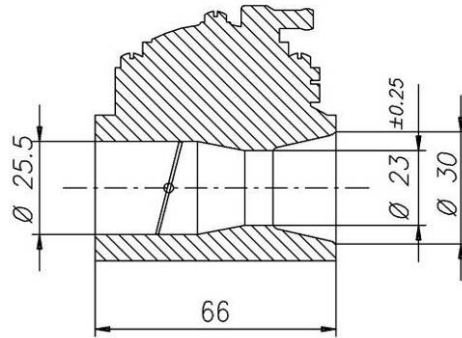
ELECTRONIC BOX MARKING (SELETTRA DIGITAL “K” IGNITION)



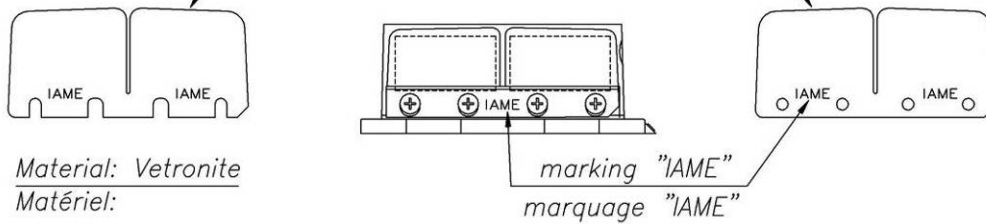


CARBURETOR DIMENSION

TILLOTSON mod. HL-334 AB

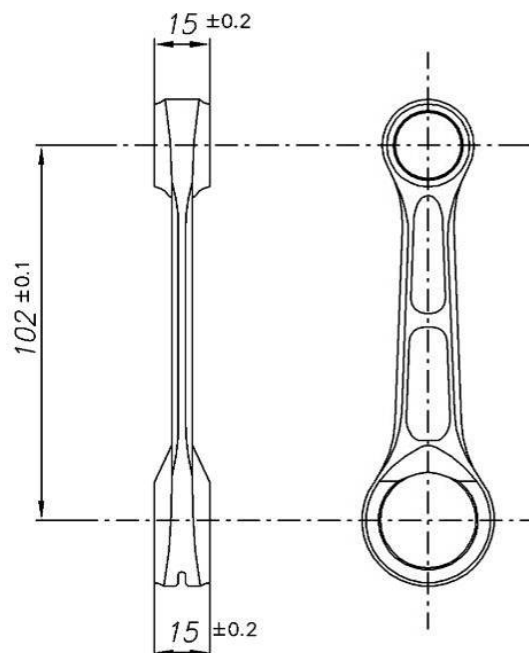
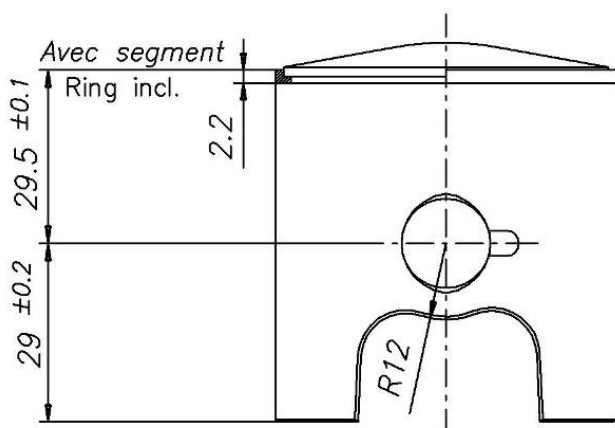


Reed petals min. thickness = 0.30 mm
 Min. épaisseur clapets = 0.30 mm



PISTON

CONNECTING ROD

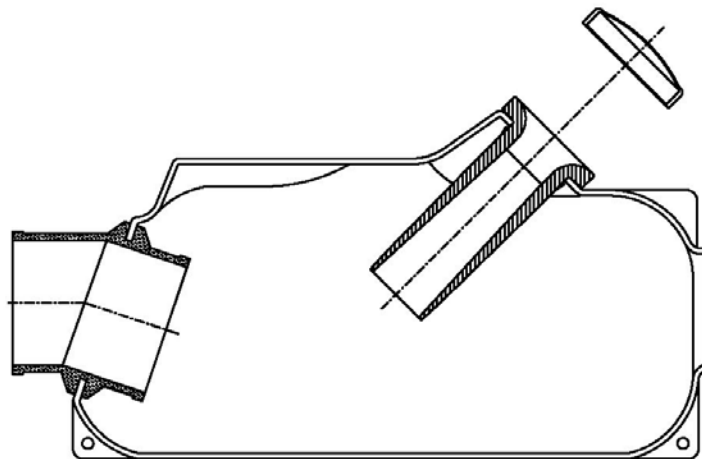
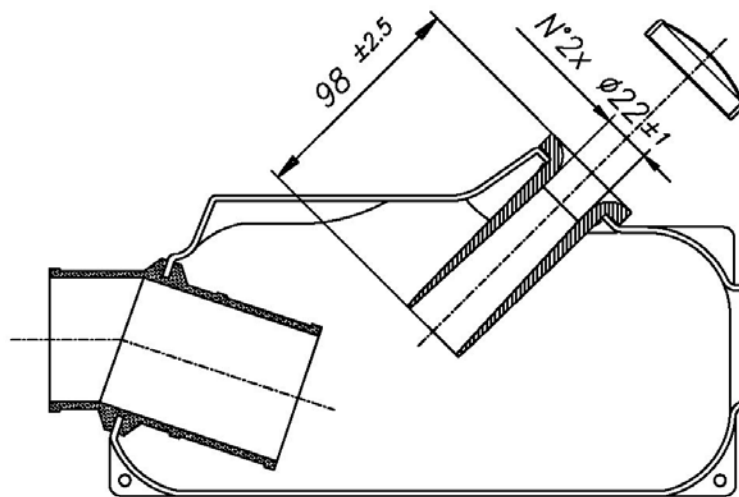


Min. weight= 109 g

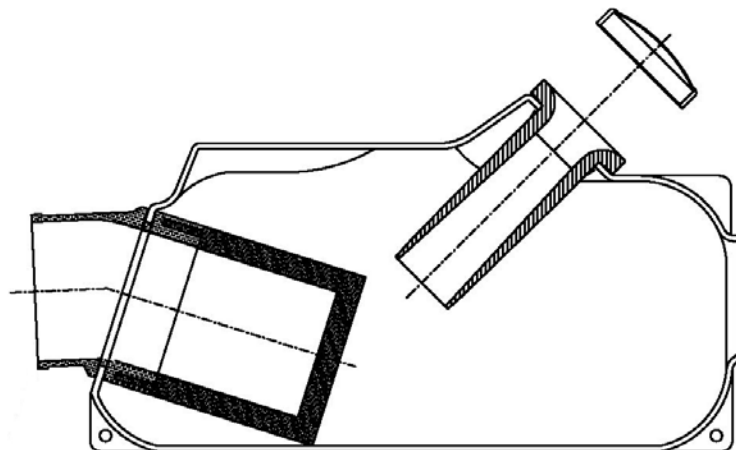


INLET SILENCER

OLD EQUIPMENT

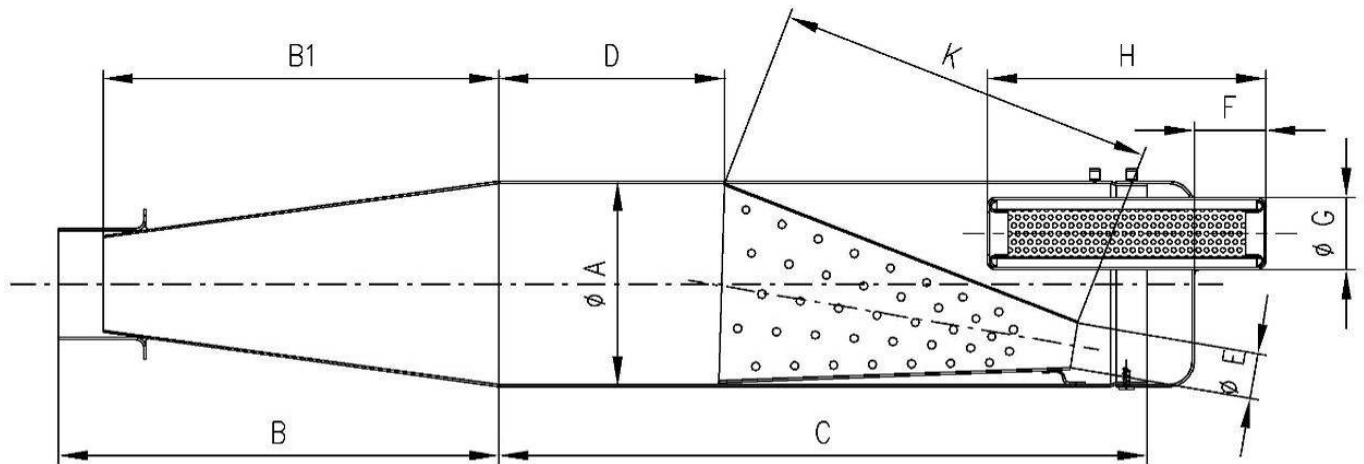


NEW EQUIPMENT





DRAWING OF THE SILENCER AND IT'S COMPONENTS



The end parts of the silencer must have two soldered pairs of lugs (one pair at the top and one pair at the bottom) to allow for fixing of seals by the Organizer so that the silencer may be opened during the competition

Measurements:

<u>A: 100 Øext.</u>	<u>E: 24</u>
<u>B: 215</u>	<u>F: 36</u>
<u>B1: 193</u>	<u>G: 35</u>
<u>C: 315</u>	<u>H: 134</u>
<u>D: 110</u>	<u>K: 185</u>

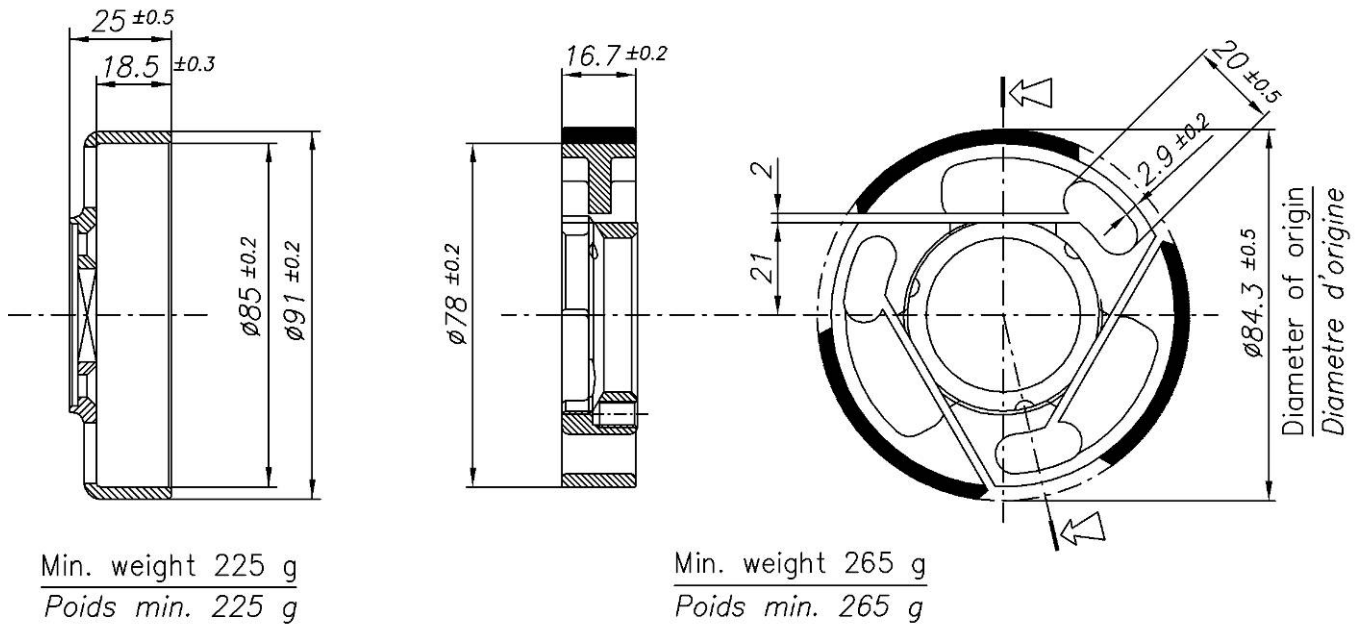
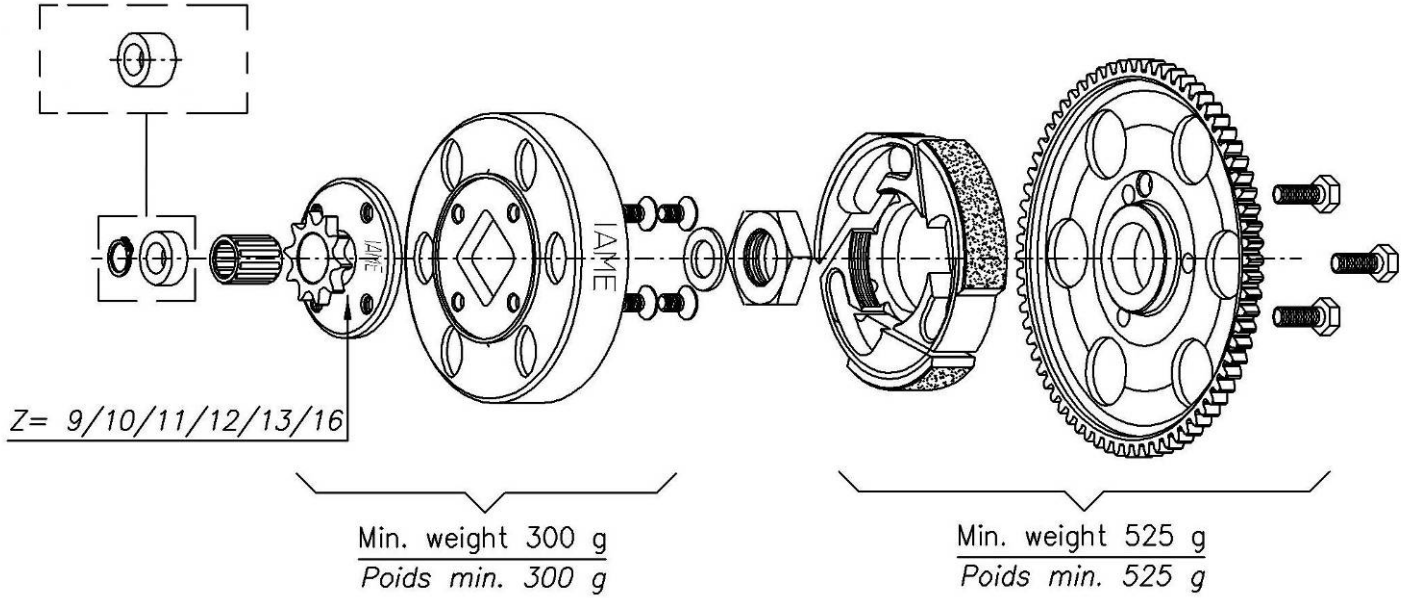
TOLERANCES
Rough dimensions

up to	25mm → ±1mm
from to	25÷60mm → ±1,5mm
more than	60mm → ±3mm



DRAWING OF THE CLUTCH – OLD EQUIPMENT

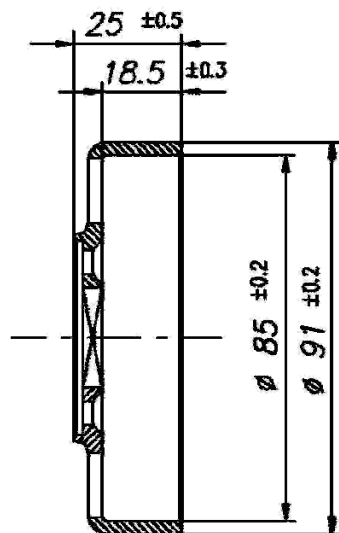
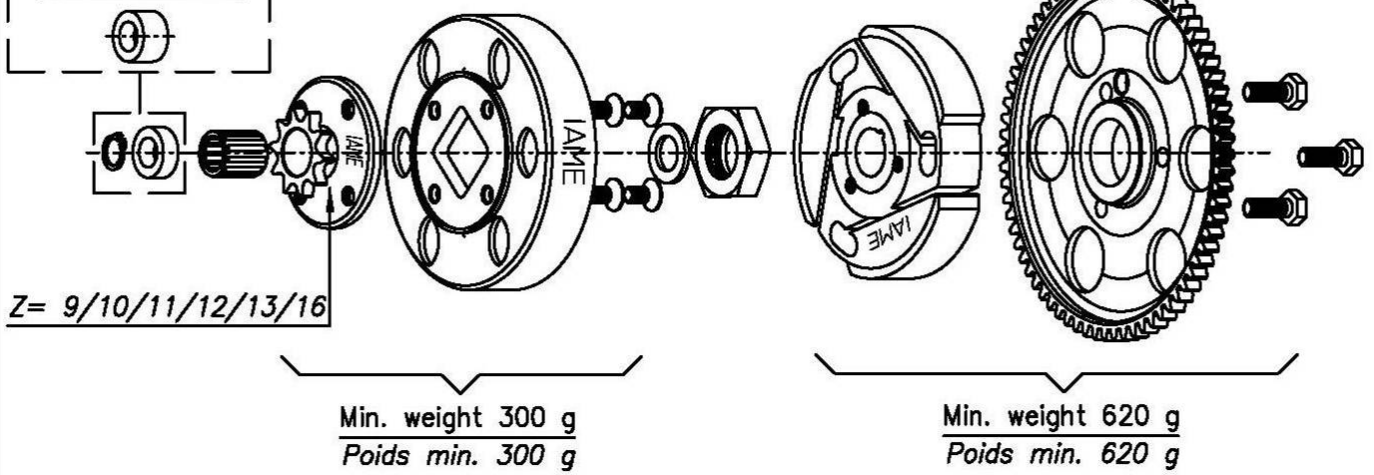
*BE USED AS
AN ALTERNATIVE*



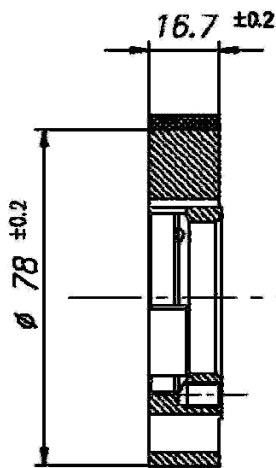


DRAWING OF THE CLUTCH – NEW EQUIPMENT

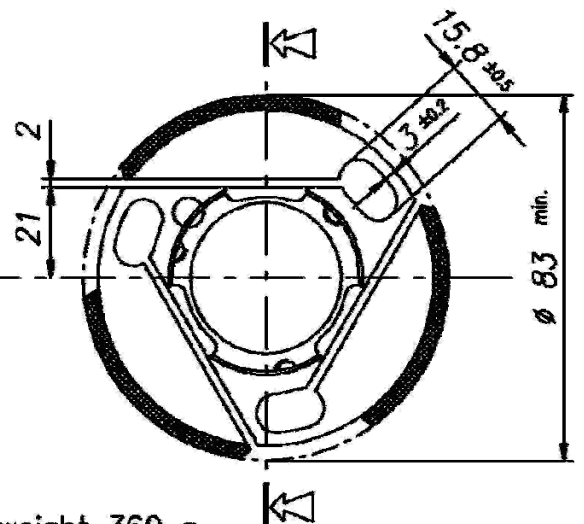
*BE USED AS
AN ALTERNATIVE*



Min. weight 225 g
Poids min. 225 g



Min. weight 360 g
Poids min. 360 g





SELETTRA DIGITAL "K" IGNITION WIRING DIAGRAM

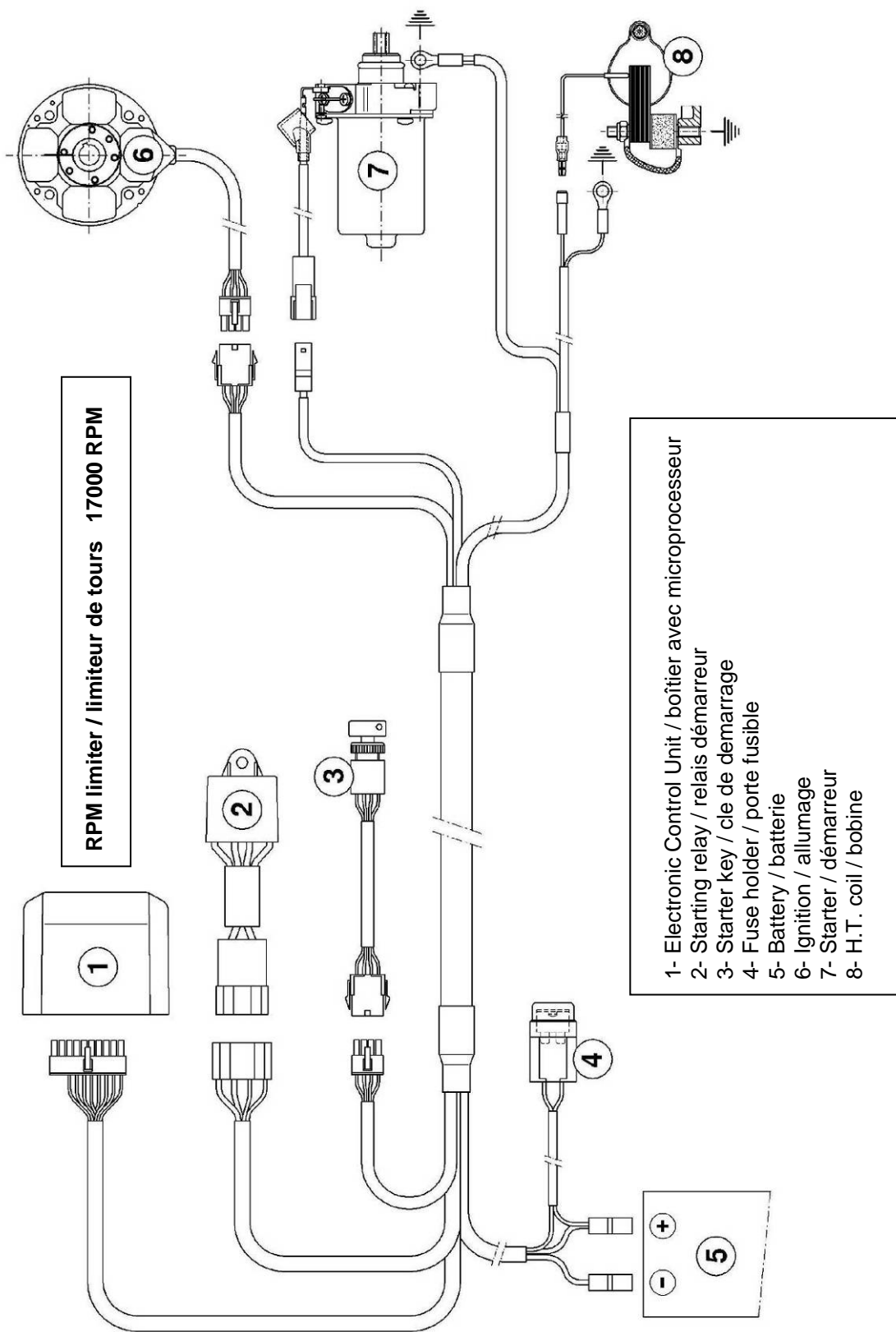




PHOTO IDENTIFICATION EXHAUST MUFFLER WITH HIS COMPONENTS



EXHAUST MUFFLER WITH HIS COMPONENTS VIEW

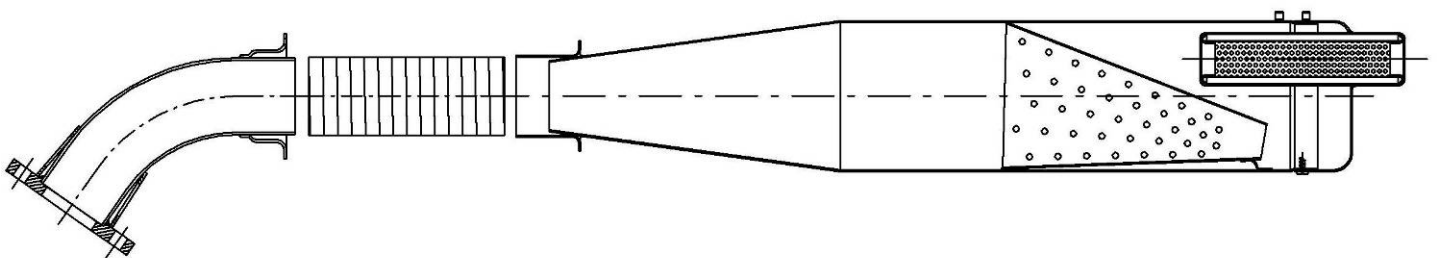
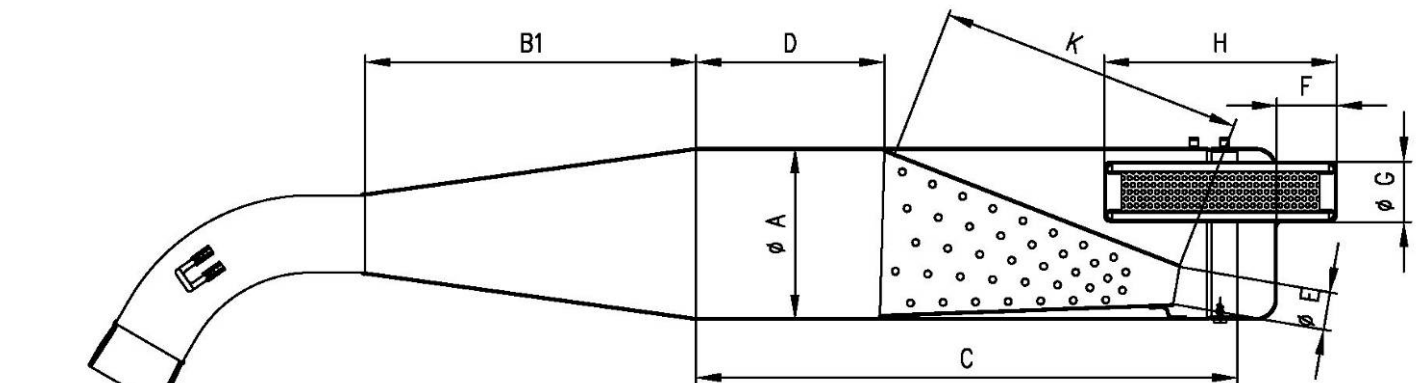




PHOTO IDENTIFICATION EXHAUST MUFFLER WITH FITTING



EXHAUST MUFFLER WITH FITTING VIEW AND DIMENSIONS

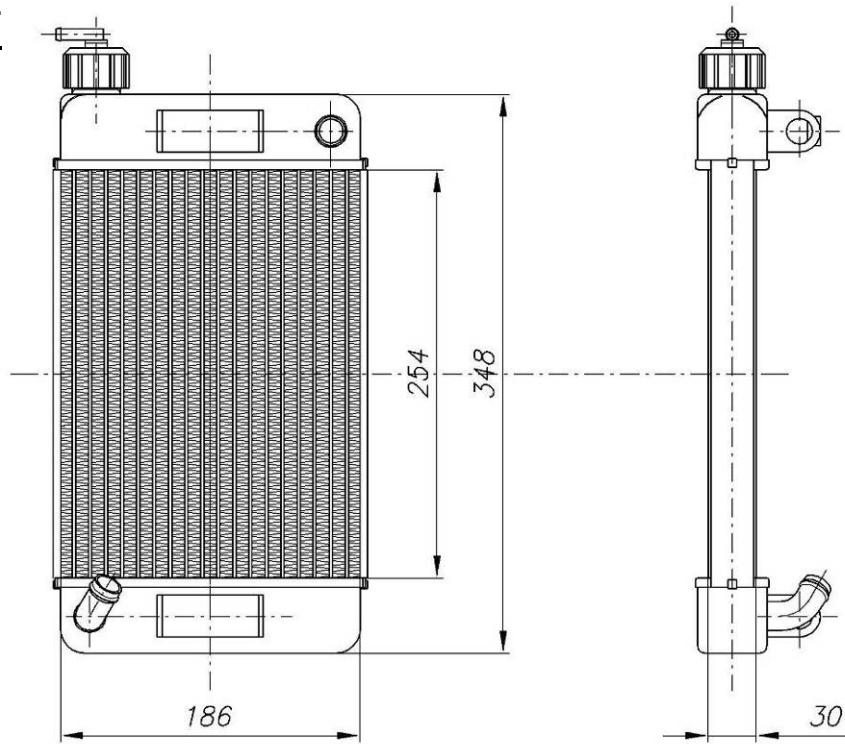


A: <u>100</u>	D: <u>110</u>	G: <u>35</u>
B1: <u>193</u>	E: <u>24</u>	H: <u>134</u>
C: <u>315</u>	F: <u>36</u>	K: <u>185</u>



RADIATOR

OLD EQUIPMENT



NEW EQUIPMENT

